

APII NIKAO REBUILD PROJECT

A snapshot ..



Architects perspective of the entrance to the new Apii Nikao

PROJECT OVERVIEW AND UPDATE

The fire in 2014 and subsequent merging of Nikao Maori and Avatea Primary schools provided the Cook Islands with an opportunity to build an environmentally sustainable school with the capacity to serve young students in a modern and flexible learning environment.

This vision while seemingly distant is beginning to take shape. The detailed designs prepared by a design and engineering company from Peoples Republic of China has recently undergone a review process by the Cook Islands Government and local engineers. The project is now in the final design stages with construction scheduled to commence in the first half of 2017.

The design and layout of the buildings as illustrated on the next page is largely based on the initial proposal prepared by the Cook Islands in 2014. It incorporates large open learning areas with adjoining group and quiet spaces, and easy to access resources. On completion Apii Nikao will set the benchmark for further primary school developments throughout the country.

FUNDING AND DELIVERY ARRANGEMENTS

In October 2015 the Government of the Peoples Republic of China (PRC) confirmed its support for the Apii Nikao Rebuild as a gratuitous grant to the Cook Islands. Under this grant arrangement the PRC Government will select a Chinese Design Company and a Contractor to build the new school.

The Project Coordinating Committee, comprising of representatives of the Ministry of Education, Apii Nikao management and PTA, Ministry of Finance and Cook Islands Investment Corporation is working closely with the PRC Government to deliver a school that meets the quality, environmental and functional needs of the school and community.

TEMPORARY CLASSROOMS FOR YEARS 7 AND 8

In December 2016 temporary classrooms will be built at the southern end of the school grounds to accommodate year 7 and 8 students. These buildings will remain at the school until the new school is complete and ready to occupy.



PLANNED OUTCOMES

The new school will:

- *accommodate 500 students and 40 staff;*
- *draw on the cultural heritage of the local area;*
- *consist of three (3) new buildings, not including the hall, with a total building area of 5,200 square metres;*
- *provide comfortable, flexible and stimulating learning environments;*
- *eliminate accessibility barriers for students and staff with disabilities; and*
- *incorporate climate adaptation measures such as solar power, water storage and cyclone protection.*

Perspective of temporary classrooms

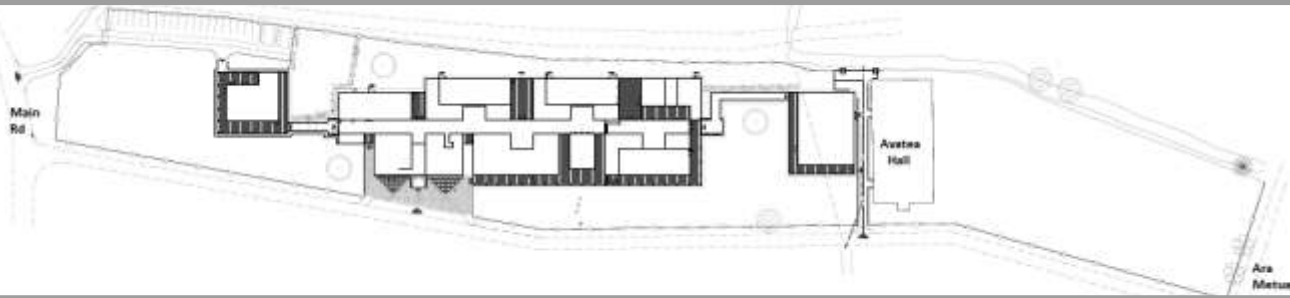


West



East

GENERAL SITE PLAN



INTERNAL LAYOUTS



- Early Childhood Education Centre 1
- Principal, Staff and Administration 2
- Main Entrance 3
- Theatre / dance / drama 4
- Junior Learning Area 5
- Intermediate Learning Area 6
- Hard & soft materials 7
- Food Technology 8
- Tuck shop 9
- Senior Learning Area 10
- Science Lab 11
- Bathroom facilities BF
- Resource rooms RR
- Group/quiet spaces GS
- Wet areas WA
- Outdoor Learning Spaces OL

VIEW OF BUILDINGS FROM ROAD SIDE



Administration, Juniors and Intermediates



Early Childhood Education



Seniors